

ULTIMATE EXUBERANCE

Living life to the full demands and ultimate recovery infusion. This premium EXuBERANCE infusion combines the recovery benefits of EXuBERANCE – Power booster and EXuBERANCE – After Party Rise & Shine giving you maximum productivity, alertness and detoxification, bringing back the quality of being full of energy, excitement and cheerfulness.

This infusion:

- Restores Hydration
- Replaces Essential Minerals & Vitamins
- Boosts Immune System
- Decrease Inflammation
- Helps relieve Pain
- Energy Boost
- Detoxify the Body
- Cleanses Vital Organs
- Relieves nausea
- Helps recover from jet lag

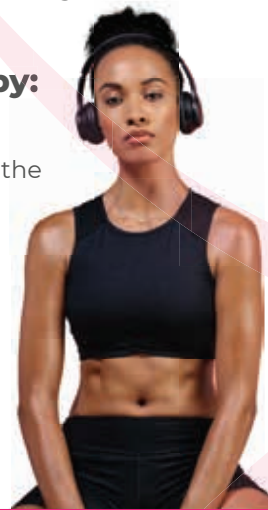


YOUTHFUL GLOW

EXuBERANCE youth glow brings out the beauty in you by rejuvenating your skin with high dosages of anti-oxidants, helping you to glow and look more youthful.

This is achieved by:

- Restores Hydration
- Prevents And Reverses the Effects of Free Radicals
- Rejuvenates Skin
- Cleanses Vital Organs



WEIGHT LOSS COMBO

This weight loss cocktail consist of both an infusion and an injection geared towards aiding with losing weight. It attests to a multitude of benefits including:

- General health Boost
- Aesthetic Enhancement
- Increased productivity & endurance
- Better fitness levels
- Slimming
- Burn excessive fat
- Promote healthy weight loss



MEGA BOOSTER

This enriched vitamin infusion restores your body with essential minerals, blends with different anti-oxidants and electrolytes to bring your body back into equilibrium, maximising your productivity and leaving you rejuvenated and feeling refreshed.

This infusion:

- Restores Hydration
- Replenishes Essential Minerals & Vitamins
- Detoxify The Body
- Cleanses Vital Organs
- Feels Rujuvin
- Increase Durability



AFTER PARTY RISE & SHINE

Hangover, stress, sleep deprivation, excess workload, dehydration, over indulgence, fatigue and decreased concentration requires and appropriate infusion. EXuBERANCE After Party Rise & Shine refreshes your body and brings you up to your flamboyant self quickly.

This infusion:

- Restores Hydration
- Decreases Inflammation
- Relieve Pain and Nausea
- Energy Boost
- Feel Refreshed
- Restores vitality



ORGANIC APOTEKE

These products are a convergance, of science and nature providing effective skincare for skins showing signs of aging. All ingredients are certified organic and the different products draws upon natures most potent anti-aging extracts diminishing fine lines from our wrinkles, lightning age spots and improving skin tone and stimulating cellular regeneration .



EFFECTIVE SKIN CARE LUXURETHIC™ COSMECEUTICALS

USE IT BECAUSE IT'S PURE. LOVE IT BECAUSE IT WORKS.

EFFECTIVE SKIN CARE RANGE

Exuberance Health and Wellness now stocks Organic Apoteke, a certified organic range of skin care products that yields clinically proven results. This skin care range is certified organic, sourced in a respectful and considerate manner of nature's resources and clinically proven to be highly effective. There are two ranges: the Active range and the Rejuvenating range



ENERGY BOOSTER

This infusion maximises your energy, alertness and fitness as it contains essential vitamins, amino acids & anti-oxidants to help keep you alert, active and productive.

This infusion:

- Increases Natural Energy Levels
- Increases Red Blood Cell Production
- Helps Regulate Sleep.
- Mood and Appetite Cycles
- Detoxifies The Body
- Boosts Immune System
- Enhances Metabolism
- To Promote Natural Weight Loss

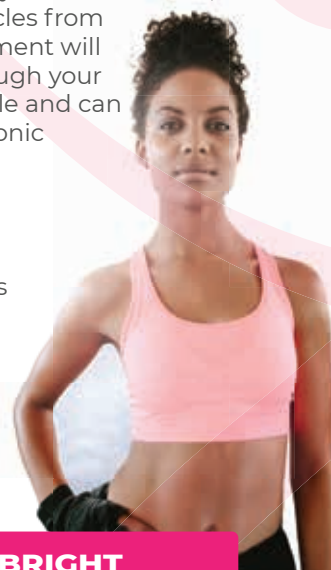


PAIN RELIEF

This treatment is both an analgesic and an anti-inflammatory aimed at relieving general body aches and pain. Whether caused by a chronic illness, injury or sore and tired muscles from excessive exercise this treatment will aide in helping you get through your daily routine without struggle and can improve quality of life in chronic illness sufferers.

This infusion will:

- Relieve general body aches & pain
- Reduce swelling and inflammation
- Aids in mobility of sore & stiff joints
- Relieve severe head aches
- Combats exhaustion & fatigue

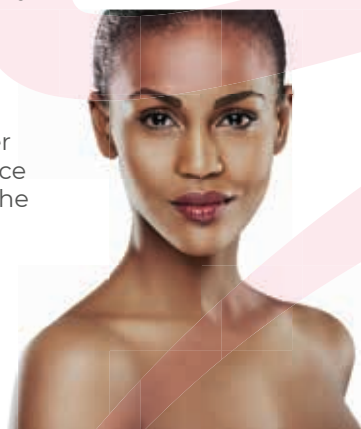


GLOW BRIGHT

This popular infusion involves 2 main active ingredients namely glutathione and vitamin C that helps naturally lighten and brighten your skin tones to a desired level and at the same time reduce excessive pigmentation and also makes you improve your overall wellness and boost your overall immune system.

This infusion will:

- Restores shade of a paler complexion of your choice
- Prevents and Reverses the effects of Free Radicals
- Rejuvenates Skin
- Simulates additional skin glow



CANNIBIDIOL (CBD)



CBD is a personalized therapy, the dosage is unique per person. The general guideline is that less is more. It is recommended to start with 6 – 12mgs per day and to increase your dosage to 12 – 24mgs spread over the day (i.e. half in the morning and half at night). Cannabis use is for adult use only. Cannabis can be beneficial to children too but should only be used under an adult's guidance. Contact us if you have any questions. Dosage is everything and you need to find your happy medium.

PILATES

The body requires three types of exercise – stretching, strength training and cardio. Few fitness techniques combine all these in one workout. Pilates is one of them. A few athletic forms of yoga give you two – stretching and strength training – such as example Ashtanga yoga. Pilates includes stretching and strength training in every exercise and at every level, beginner to advanced. Further, at the advanced level of mat exercise repertoire, Pilates also gives you a cardio workout.

It can also improve the patient's posture and muscle symmetry. Pilates is surprisingly gentle and it has no impact on the joints as compared to other types of exercises, which is so important when recovering from an injury. If you are using Pilates for an injury, always make sure you get a clearance letter from your GP before starting with the regime.



+27 (31) 830 2309

www.exuberance.co.za